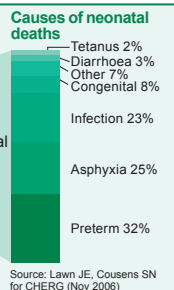
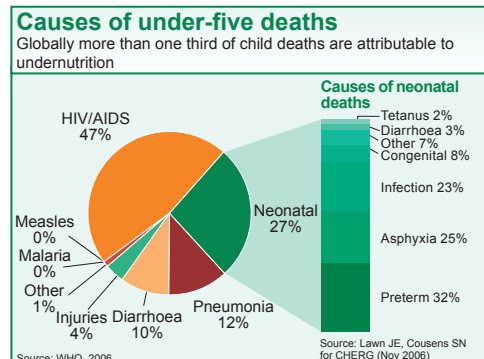
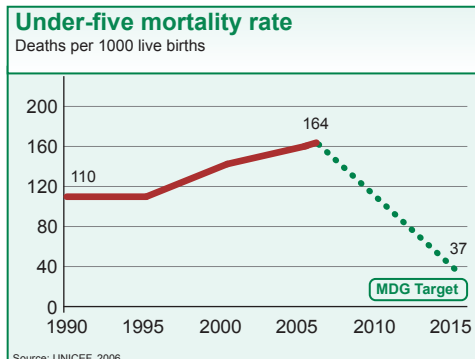




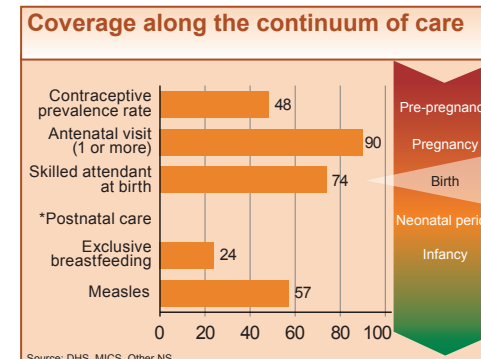
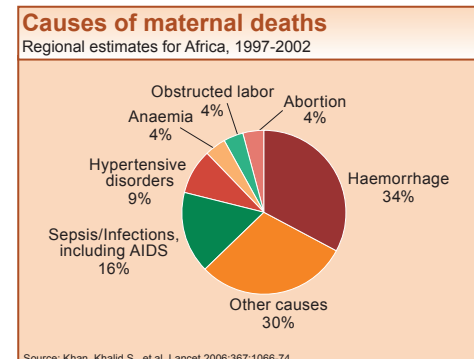
DEMOGRAPHICS

Total population (000)	1,134 (2006)
Total under-five population (000)	147 (2006)
Births (000)	33 (2006)
Birth registration (%)	53 (2006)
Under-five mortality rate (per 1000 live births)	164 (2006)
Infant mortality rate (per 1000 live births)	112 (2006)
Neonatal mortality rate (per 1000 live births)	38 (2006)
Total under-five deaths (000)	5 (2006)
Maternal mortality ratio (per 100,000 live births)	390 (2005)
Lifetime risk of maternal death (1 in N)	120 (2005)
Total maternal deaths	120 (2005)



MATERNAL AND NEWBORN HEALTH

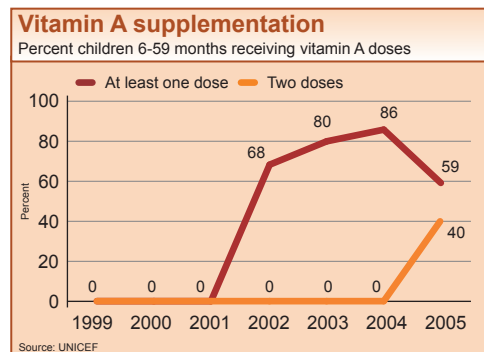
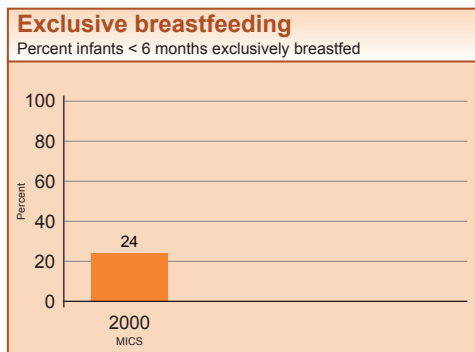
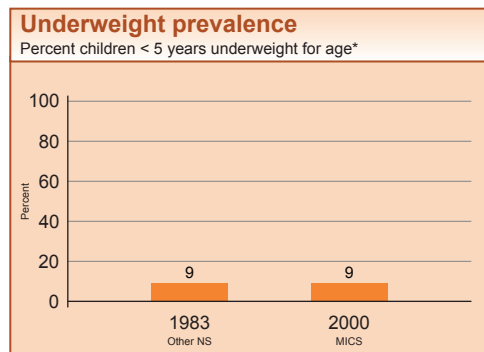
Unmet need for family planning (%)	---
Antenatal visits for woman (4 or more visits, %)	---
Intermittent preventive treatment for malaria (%)	---
C-section rate (total, urban, rural, %)	---, ---, --- (Minimum target is 5% and maximum target is 15%)
Early initiation of breastfeeding (within 1 hr of birth, %)	---
Postnatal visit for baby (within 2 days for home births, %)	---



INTERVENTION COVERAGE FOR MOTHERS, NEWBORNS AND CHILDREN

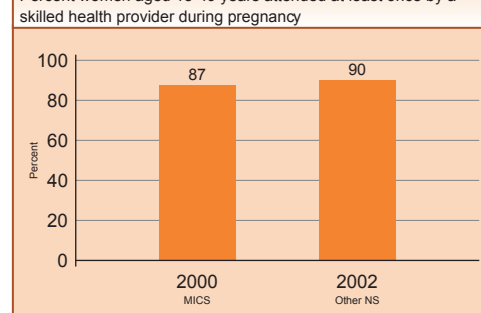
NUTRITION

Stunting prevalence (moderate and severe, %)	37 (2000)	Complementary feeding rate (6-9 months, %)	60 (2000)
Wasting prevalence (moderate and severe, %)	2 (2000)	Low birthweight incidence (%)	9 (2000)



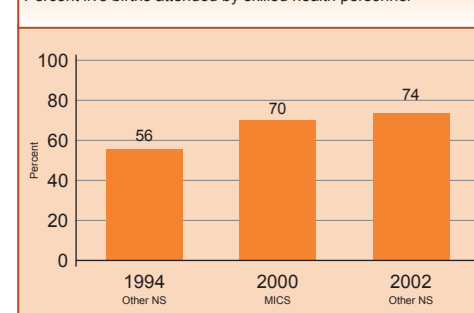
Antenatal care

Percent women aged 15-49 years attended at least once by a skilled health provider during pregnancy



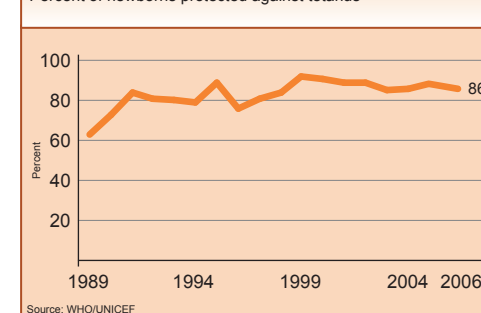
Skilled attendant at delivery

Percent live births attended by skilled health personnel



Neonatal tetanus protection

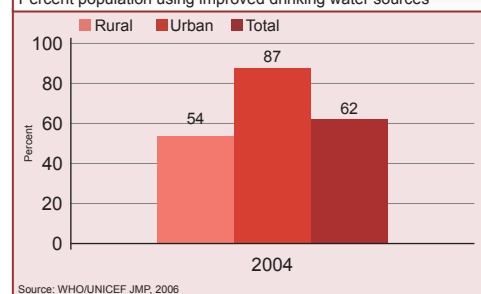
Percent of newborns protected against tetanus



WATER AND SANITATION

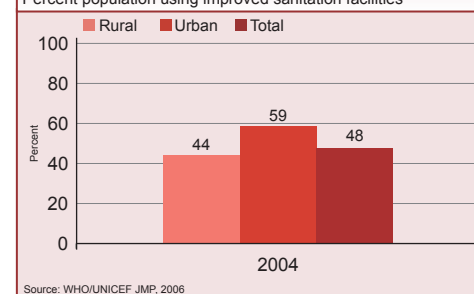
Water

Percent population using improved drinking water sources



Sanitation

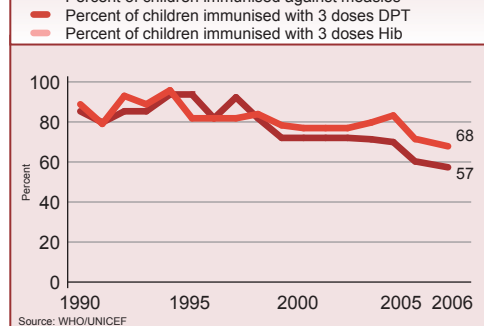
Percent population using improved sanitation facilities



CHILD HEALTH

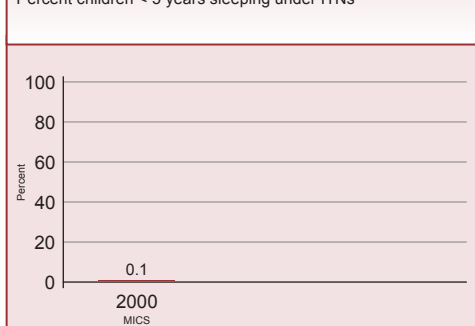
Immunization

Percent of children immunised against measles, 3 doses DPT, 3 doses Hib



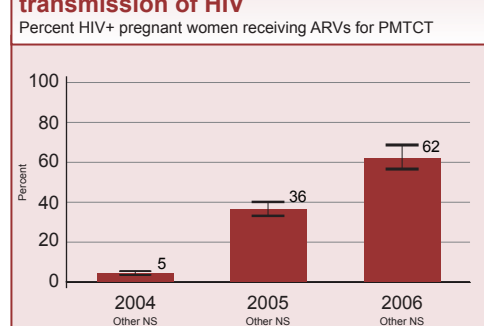
Malaria prevention

Percent children < 5 years sleeping under ITNs*



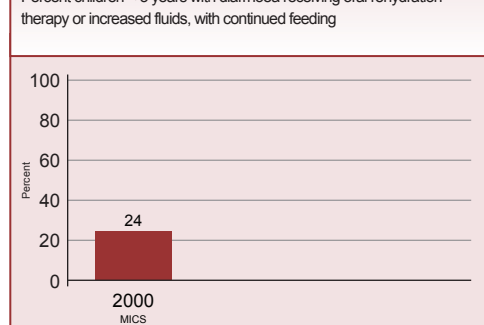
Prevention of mother to child transmission of HIV

Percent HIV+ pregnant women receiving ARVs for PMTCT



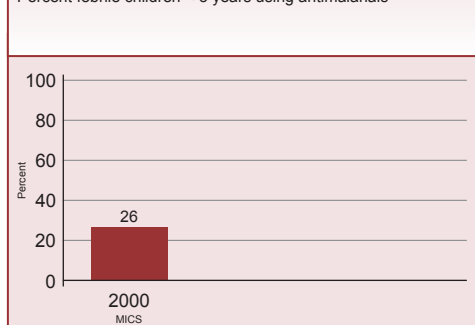
Diarrhoeal disease treatment

Percent children < 5 years with diarrhoea receiving oral rehydration therapy or increased fluids, with continued feeding



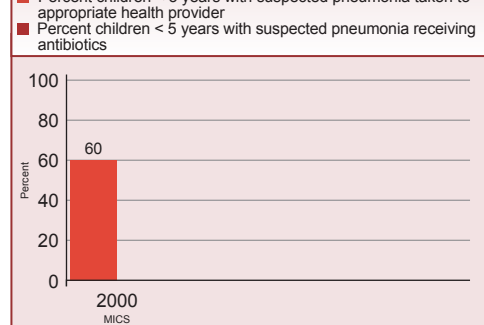
Malaria treatment

Percent febrile children < 5 years using antimalarials*



Pneumonia treatment

Percent children < 5 years with suspected pneumonia taken to appropriate health provider, 5 years with suspected pneumonia receiving antibiotics



POLICIES

International Code of Marketing of Breastmilk Substitutes	Partial
New ORS formula and zinc for management of diarrhoea	---
Community treatment of pneumonia with antibiotics	No
IMCI adapted to cover newborns 0-1 week of age	No
Costed implementation plan(s) for maternal, newborn and child health available	No
Midwives be authorised to administer a core set of life saving interventions	Yes
Maternity protection in accordance with ILO Convention 183	No
Specific notification of maternal deaths	Yes

SYSTEMS

Financial Flows and Human Resources

Per capita total expenditure on health (US\$)	367 (2007)
General government expenditure on health as % of total government expenditure (%)	11 (2007)
Out-of-pocket expenditure as % of total expenditure on health (%)	15 (2007)
Density of health workers (per 1000 population)	6.5 (2004)
Official Development Assistance to child health per child (US\$)	15 (2005)
Official Development Assistance to maternal and neonatal health per live birth (US\$)	1 (2005)
National availability of Emergency Obstetric Care services (% of recommended minimum)	---

EQUITY

Coverage gap by wealth quintile

No data	
Coverage gap (%)	2000 MICS: 35
Ratio poorest/wealthiest	
Difference poorest-wealthiest (%)	