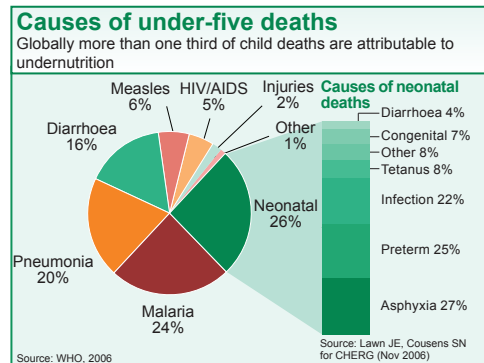
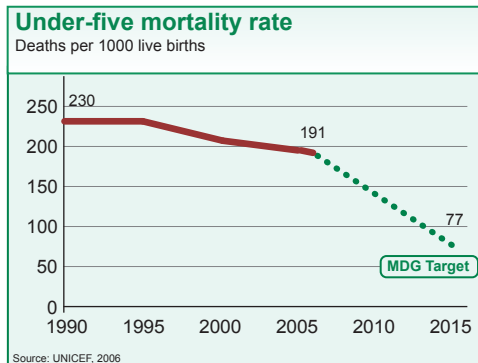




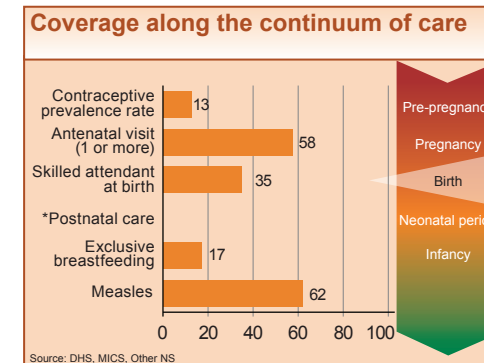
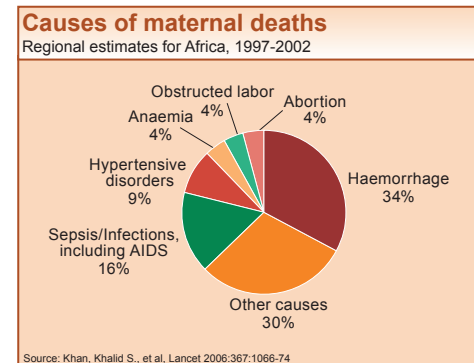
## DEMOGRAPHICS

Total population (000)	144,720 (2006)
Total under-five population (000)	24,503 (2006)
Births (000)	5,909 (2006)
Birth registration (%)	33 (2006)
Under-five mortality rate (per 1000 live births)	191 (2006)
Infant mortality rate (per 1000 live births)	99 (2006)
Neonatal mortality rate (per 1000 live births)	53 (2006)
Total under-five deaths (000)	1,129 (2006)
Maternal mortality ratio (per 100,000 live births)	1,100 (2005)
Lifetime risk of maternal death (1 in N)	18 (2005)
Total maternal deaths	59,000 (2005)



## MATERNAL AND NEWBORN HEALTH

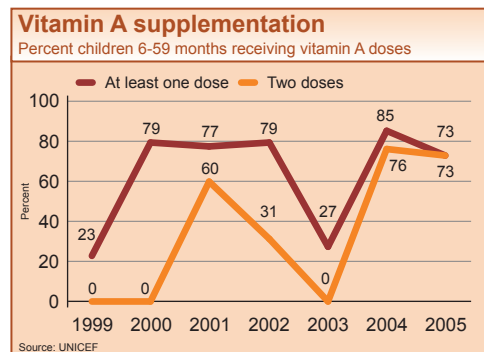
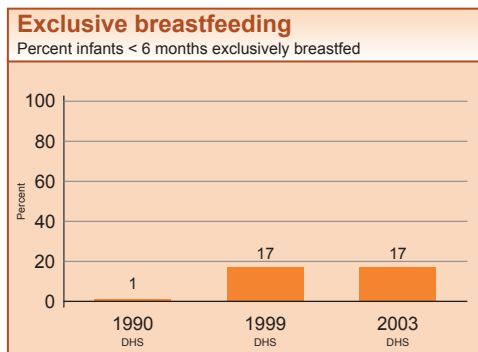
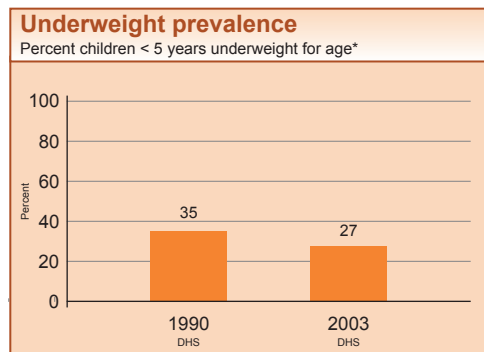
Unmet need for family planning (%)	17 (2003)
Antenatal visits for woman (4 or more visits, %)	47 (2003)
Intermittent preventive treatment for malaria (%)	1 (2003)
C-section rate (total, urban, rural, %) (Minimum target is 5% and maximum target is 15%)	2, 4, 1 (2003)
Early initiation of breastfeeding (within 1 hr of birth, %)	32 (2003)
Postnatal visit for baby (within 2 days for home births, %)	---



## INTERVENTION COVERAGE FOR MOTHERS, NEWBORNS AND CHILDREN

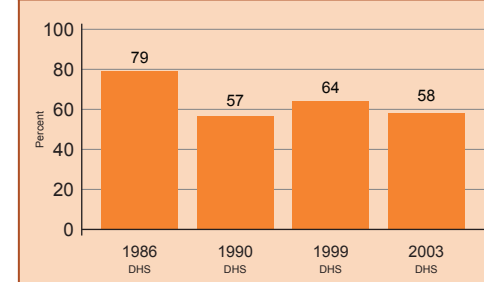
### NUTRITION

Stunting prevalence (moderate and severe, %)	43 (2003)	Complementary feeding rate (6-9 months, %)	64 (2003)
Wasting prevalence (moderate and severe, %)	11 (2003)	Low birthweight incidence (%)	14 (2003)



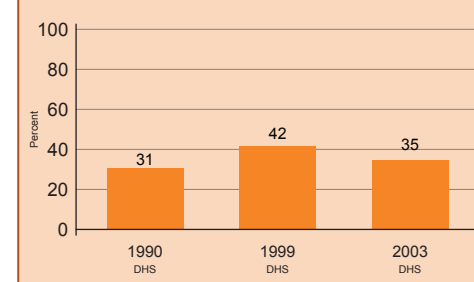
### Antenatal care

Percent women aged 15-49 years attended at least once by a skilled health provider during pregnancy



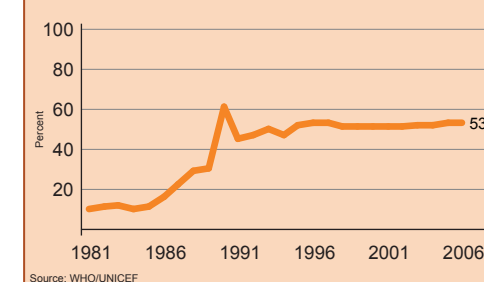
### Skilled attendant at delivery

Percent live births attended by skilled health personnel



### Neonatal tetanus protection

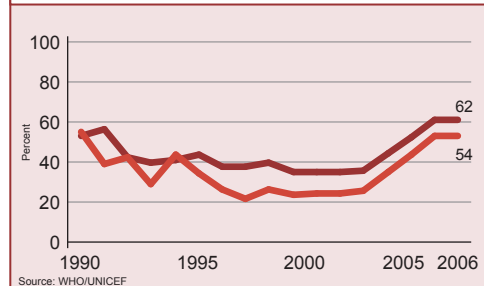
Percent of newborns protected against tetanus



## CHILD HEALTH

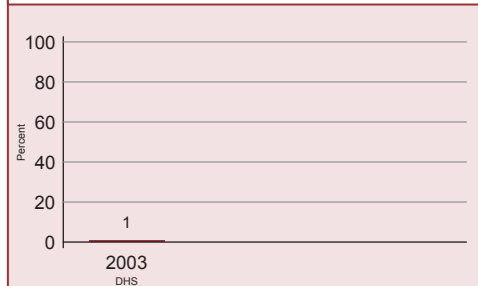
### Immunization

Percent of children immunised against measles  
Percent of children immunised with 3 doses DPT  
Percent of children immunised with 3 doses Hib



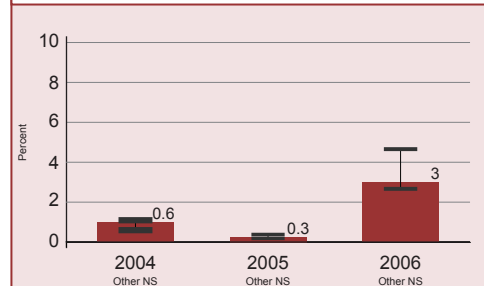
### Malaria prevention

Percent children < 5 years sleeping under ITNs



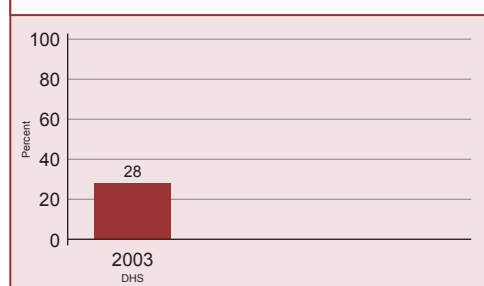
### Prevention of mother to child transmission of HIV

Percent HIV+ pregnant women receiving ARVs for PMTCT



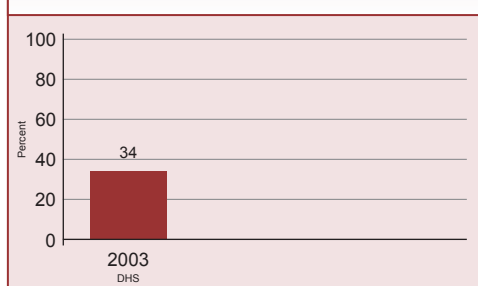
### Diarrhoeal disease treatment

Percent children < 5 years with diarrhoea receiving oral rehydration therapy or increased fluids, with continued feeding



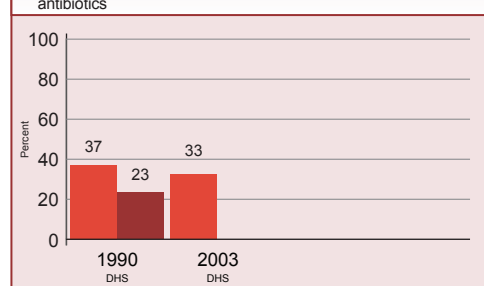
### Malaria treatment

Percent febrile children < 5 years using antimalarials



### Pneumonia treatment

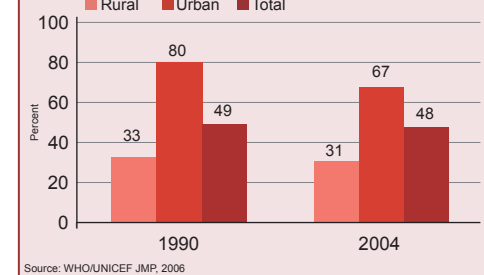
Percent children < 5 years with suspected pneumonia taken to appropriate health provider  
Percent children < 5 years with suspected pneumonia receiving antibiotics



## WATER AND SANITATION

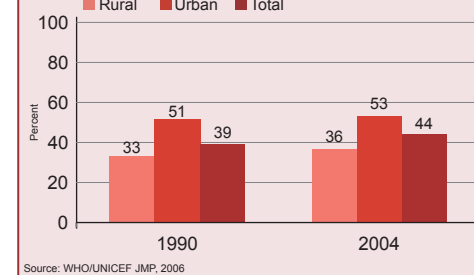
### Water

Percent population using improved drinking water sources



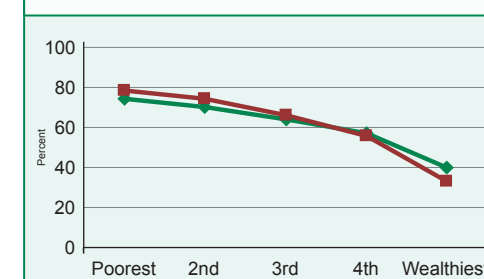
### Sanitation

Percent population using improved sanitation facilities



## EQUITY

### Coverage gap by wealth quintile



	1990 DHS	2003 DHS
Coverage gap (%)	65	62
Ratio poorest/wealthiest	1.9	2.4
Difference poorest-wealthiest (%)	35	45

## POLICIES

International Code of Marketing of Breastmilk Substitutes	Yes
New ORS formula and zinc for management of diarrhoea	Yes
Community treatment of pneumonia with antibiotics	No
IMCI adapted to cover newborns 0-1 week of age	Yes
Costed implementation plan(s) for maternal, newborn and child health available	Yes
Midwives be authorised to administer a core set of life saving interventions	Yes
Maternity protection in accordance with ILO Convention 183	No
Specific notification of maternal deaths	No

## SYSTEMS

### Financial Flows and Human Resources

Per capita total expenditure on health (US\$)	53 (2007)
General government expenditure on health as % of total government expenditure (%)	4 (2007)
Out-of-pocket expenditure as % of total expenditure on health (%)	63 (2007)
Density of health workers (per 1000 population)	2.0 (2003)
Official Development Assistance to child health per child (US\$)	2 (2005)
Official Development Assistance to maternal and neonatal health per live birth (US\$)	3 (2005)
National availability of Emergency Obstetric Care services (% of recommended minimum)	---