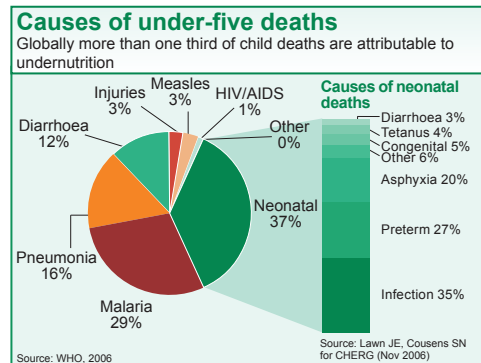
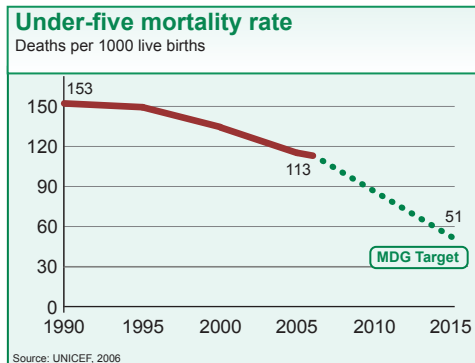




## DEMOGRAPHICS

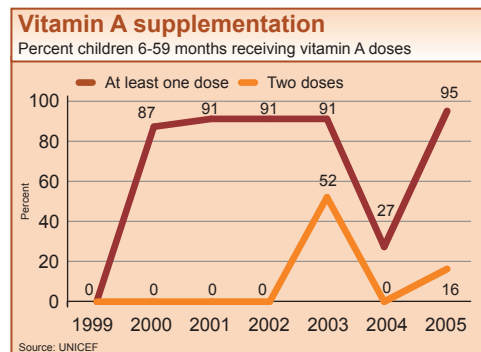
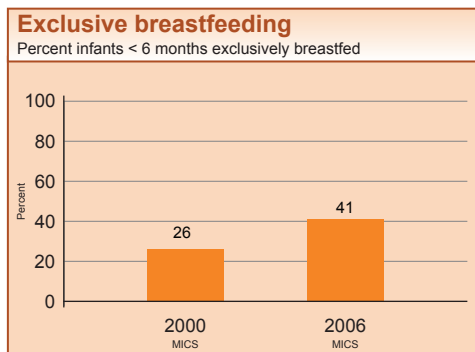
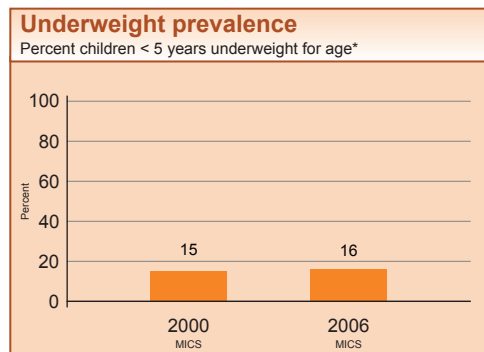
Total population (000)	1,663 (2006)
Total under-five population (000)	261 (2006)
Births (000)	60 (2006)
Birth registration (%)	55 (2006)
Under-five mortality rate (per 1000 live births)	113 (2006)
Infant mortality rate (per 1000 live births)	84 (2006)
Neonatal mortality rate (per 1000 live births)	46 (2006)
Total under-five deaths (000)	7 (2006)
Maternal mortality ratio (per 100,000 live births)	690 (2005)
Lifetime risk of maternal death (1 in N)	32 (2005)
Total maternal deaths	360 (2005)



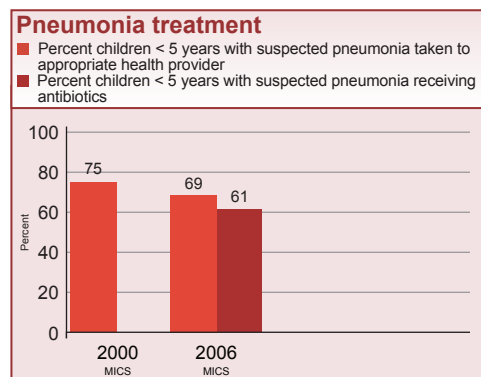
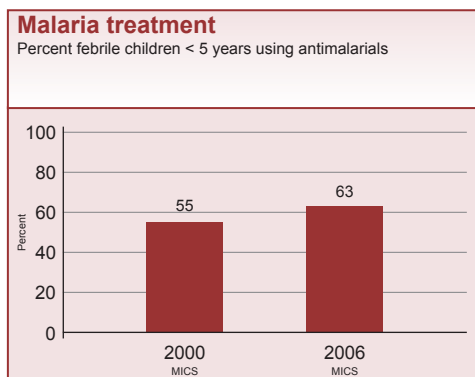
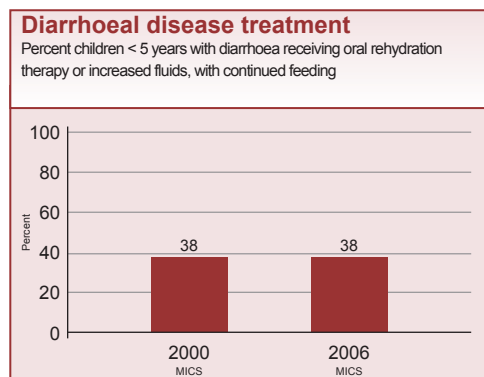
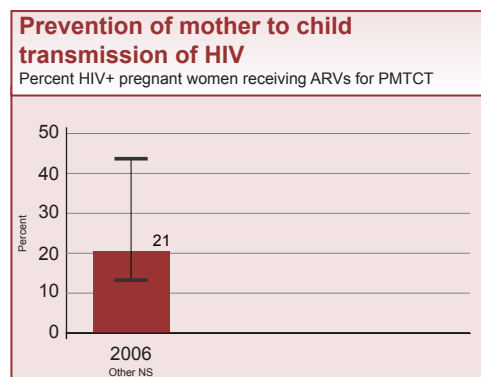
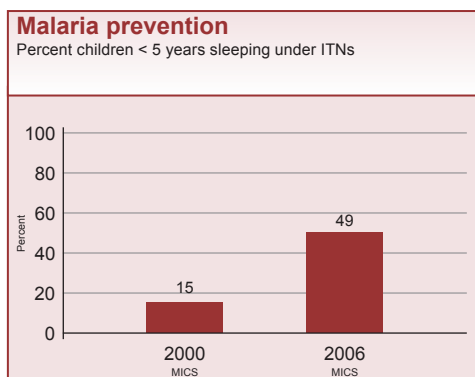
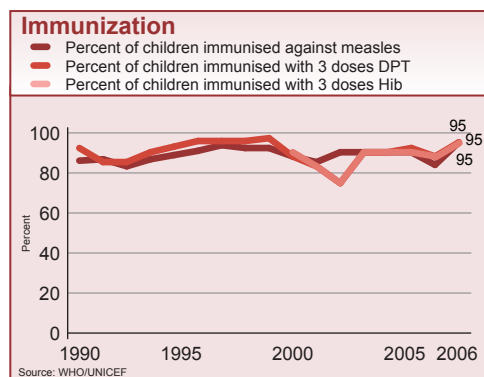
## INTERVENTION COVERAGE FOR MOTHERS, NEWBORNS AND CHILDREN

### NUTRITION

Stunting prevalence (moderate and severe, %)	28 (2006)	Complementary feeding rate (6-9 months, %)	44 (2006)
Wasting prevalence (moderate and severe, %)	7 (2006)	Low birthweight incidence (%)	20 (2006)

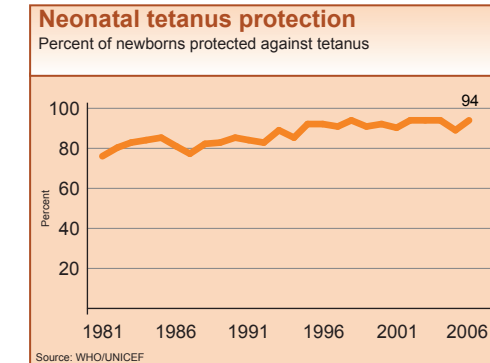
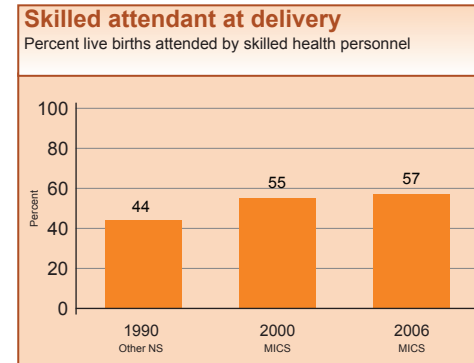
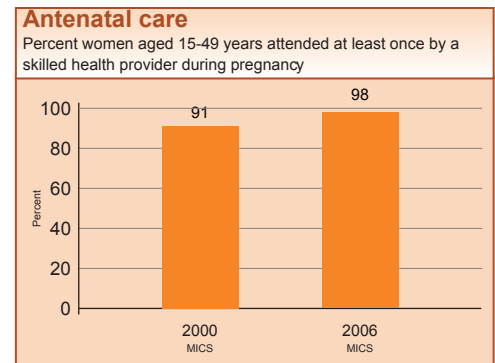
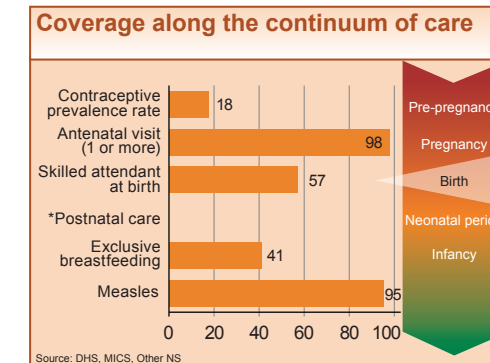
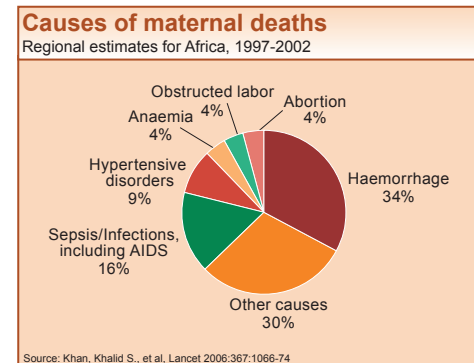


## CHILD HEALTH

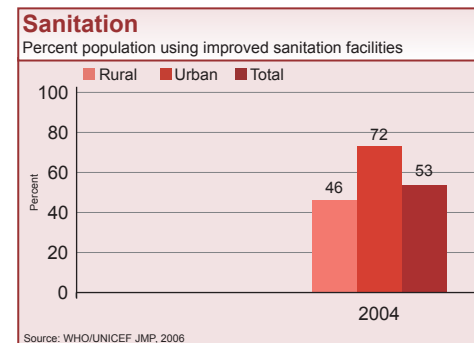
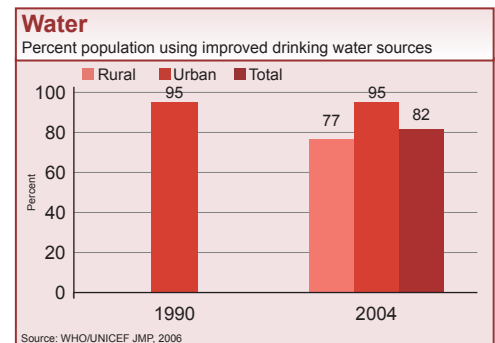


## MATERNAL AND NEWBORN HEALTH

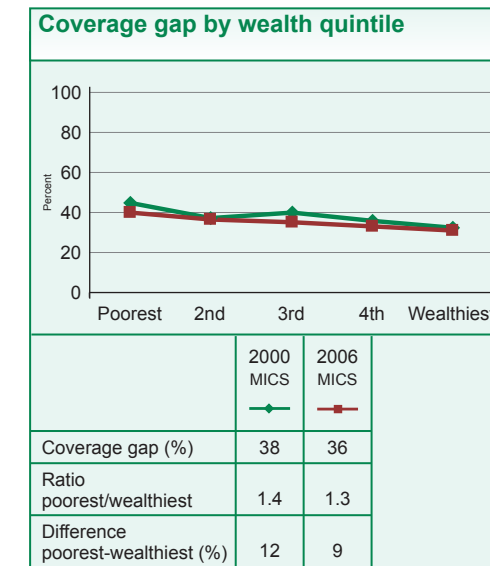
Unmet need for family planning (%)	---
Antenatal visits for woman (4 or more visits, %)	---
Intermittent preventive treatment for malaria (%)	33 (2006)
C-section rate (total, urban, rural, %)	---
Early initiation of breastfeeding (within 1 hr of birth, %)	48 (2006)
Postnatal visit for baby (within 2 days for home births, %)	---



## WATER AND SANITATION



## EQUITY



## POLICIES

International Code of Marketing of Breastmilk Substitutes	Yes
New ORS formula and zinc for management of diarrhoea	---
Community treatment of pneumonia with antibiotics	Yes
IMCI adapted to cover newborns 0-1 week of age	Yes
Costed implementation plan(s) for maternal, newborn and child health available	Yes
Midwives be authorised to administer a core set of life saving interventions	Yes
Maternity protection in accordance with ILO Convention 183	No
Specific notification of maternal deaths	No

## SYSTEMS

### Financial Flows and Human Resources

Per capita total expenditure on health (US\$)	88 (2007)
General government expenditure on health as % of total government expenditure (%)	6 (2007)
Out-of-pocket expenditure as % of total expenditure on health (%)	50 (2007)
Density of health workers (per 1000 population)	1.4 (2003)
Official Development Assistance to child health per child (US\$)	18 (2005)
Official Development Assistance to maternal and neonatal health per live birth (US\$)	11 (2005)
National availability of Emergency Obstetric Care services (% of recommended minimum)	86 (2002)