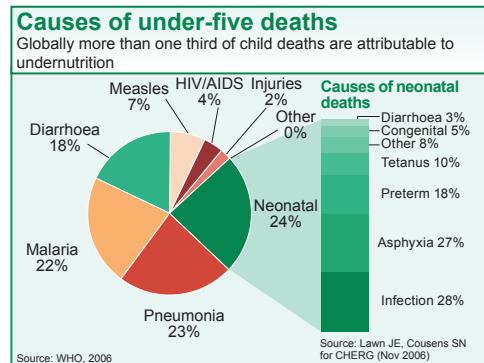
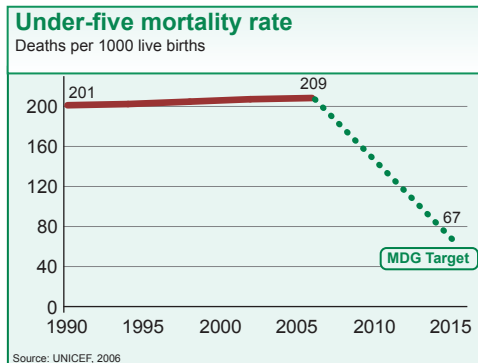




DEMOGRAPHICS

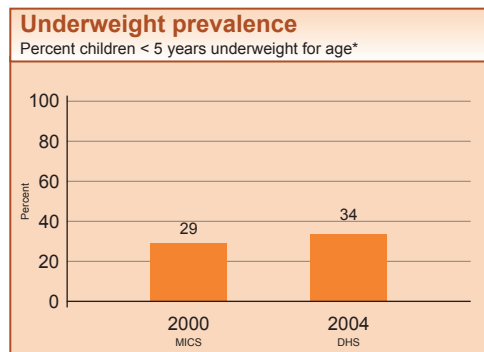
| | |
|--|---------------|
| Total population (000) | 10,468 (2006) |
| Total under-five population (000) | 1,943 (2006) |
| Births (000) | 482 (2006) |
| Birth registration (%) | 9 (2006) |
| Under-five mortality rate (per 1000 live births) | 209 (2006) |
| Infant mortality rate (per 1000 live births) | 124 (2006) |
| Neonatal mortality rate (per 1000 live births) | 45 (2006) |
| Total under-five deaths (000) | 101 (2006) |
| Maternal mortality ratio (per 100,000 live births) | 1,500 (2005) |
| Lifetime risk of maternal death (1 in N) | 11 (2005) |
| Total maternal deaths | 6,900 (2005) |



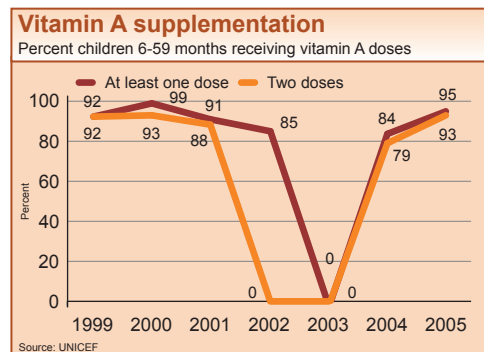
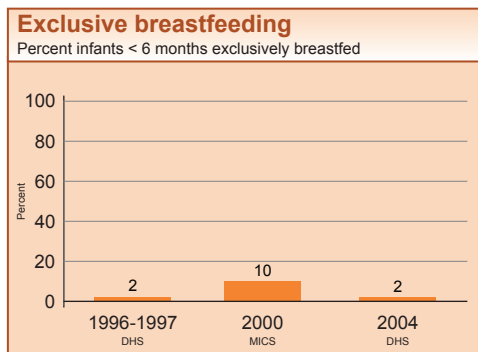
INTERVENTION COVERAGE FOR MOTHERS, NEWBORNS AND CHILDREN

NUTRITION

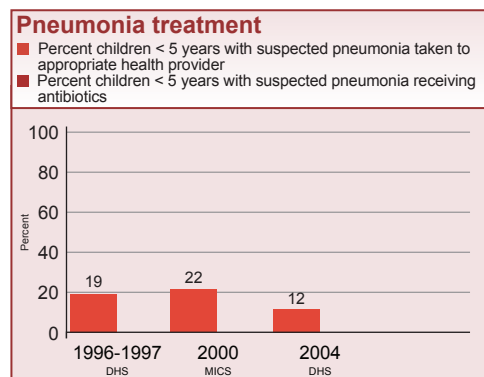
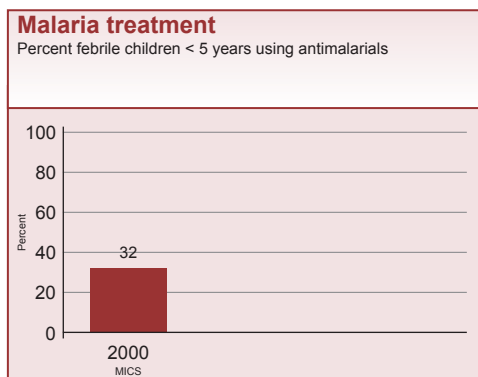
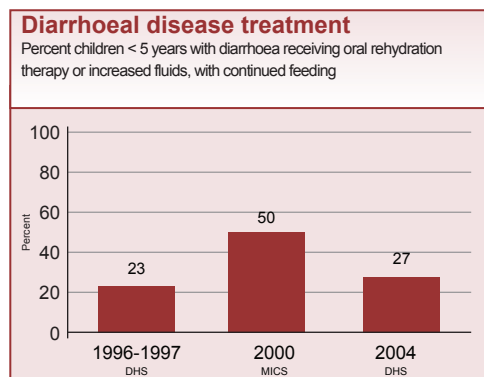
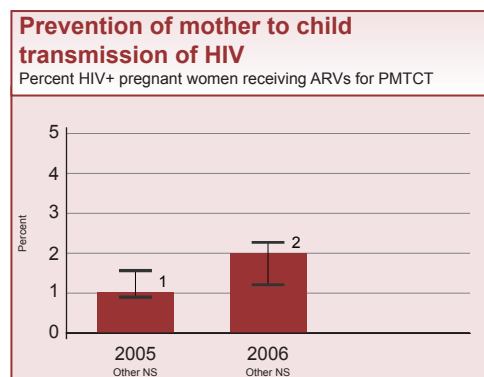
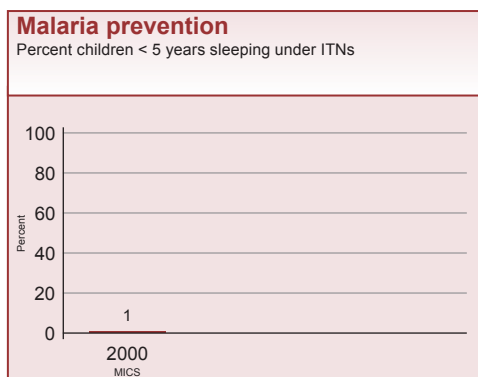
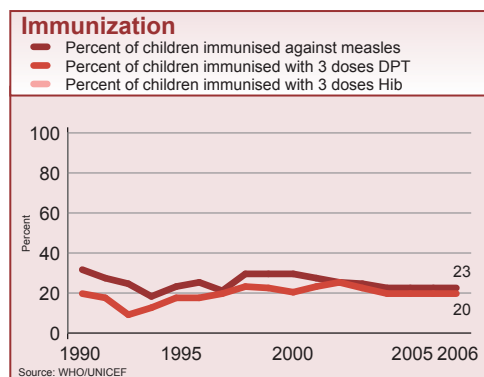
| | | | |
|--|-----------|--|-----------|
| Stunting prevalence (moderate and severe, %) | 45 (2004) | Complementary feeding rate (6-9 months, %) | 77 (2004) |
| Wasting prevalence (moderate and severe, %) | 16 (2004) | Low birthweight incidence (%) | 22 (2004) |



*Based on 2006 WHO reference population

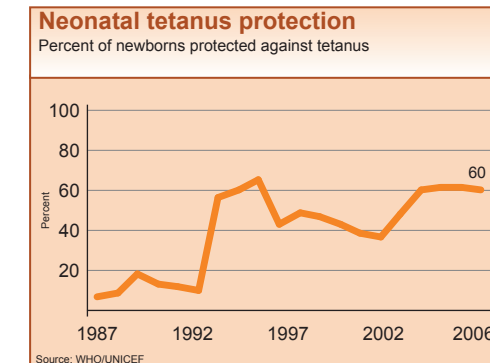
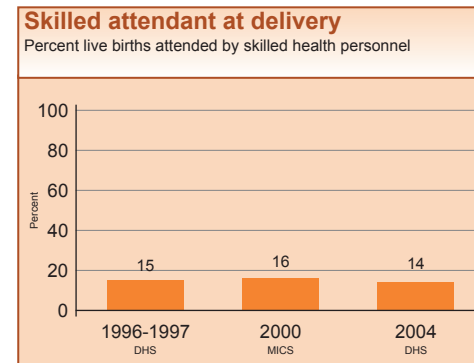
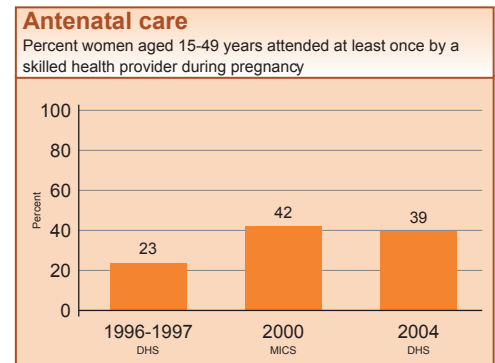
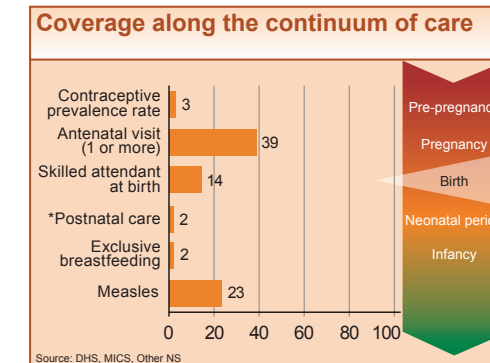
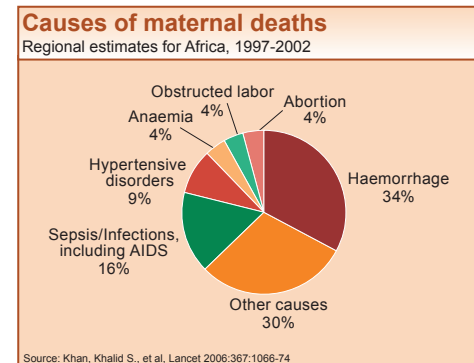


CHILD HEALTH

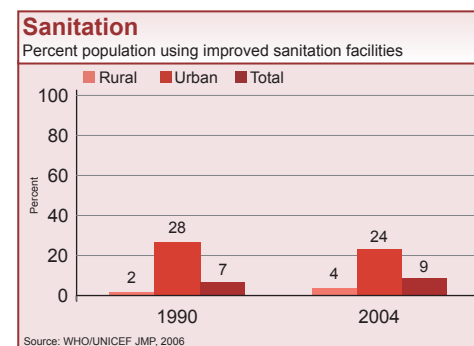
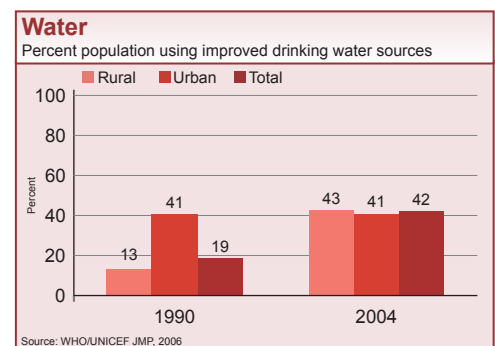


MATERNAL AND NEWBORN HEALTH

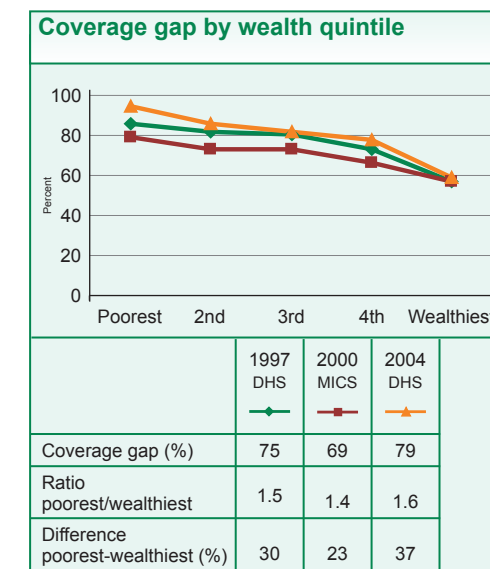
| | |
|---|----------------|
| Unmet need for family planning (%) | 23 (2004) |
| Antenatal visits for woman (4 or more visits, %) | 18 (2004) |
| Intermittent preventive treatment for malaria (%) | --- |
| C-section rate (total, urban, rural, %) | 0, 1, 0 (2004) |
| Early initiation of breastfeeding (within 1 hr of birth, %) | 34 (2004) |
| Postnatal visit for baby (within 2 days for home births, %) | --- |



WATER AND SANITATION



EQUITY



POLICIES

| | |
|--|---------|
| International Code of Marketing of Breastmilk Substitutes | No |
| New ORS formula and zinc for management of diarrhoea | Yes |
| Community treatment of pneumonia with antibiotics | No |
| IMCI adapted to cover newborns 0-1 week of age | No |
| Costed implementation plan(s) for maternal, newborn and child health available | Yes |
| Midwives be authorised to administer a core set of life saving interventions | Partial |
| Maternity protection in accordance with ILO Convention 183 | No |
| Specific notification of maternal deaths | No |

SYSTEMS

Financial Flows and Human Resources

| | |
|---|------------|
| Per capita total expenditure on health (US\$) | 42 (2007) |
| General government expenditure on health as % of total government expenditure (%) | 10 (2007) |
| Out-of-pocket expenditure as % of total expenditure on health (%) | 60 (2007) |
| Density of health workers (per 1000 population) | 0.5 (2004) |
| Official Development Assistance to child health per child (US\$) | 4 (2005) |
| Official Development Assistance to maternal and neonatal health per live birth (US\$) | 5 (2005) |
| National availability of Emergency Obstetric Care services (% of recommended minimum) | 40 (2002) |