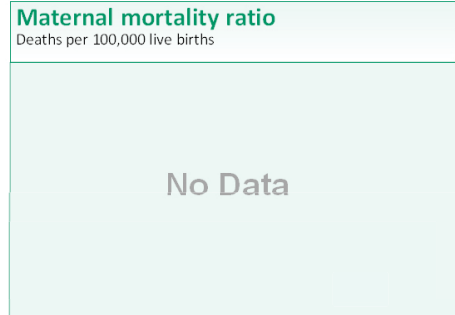
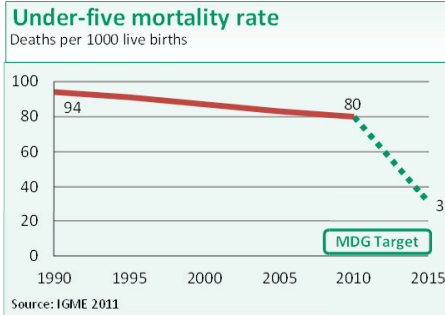


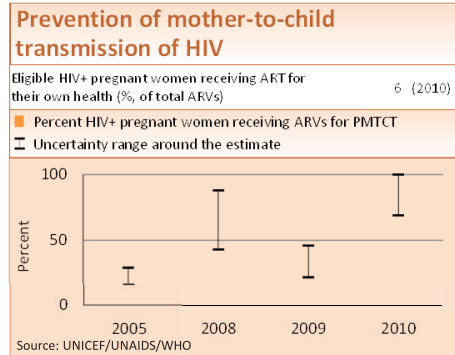
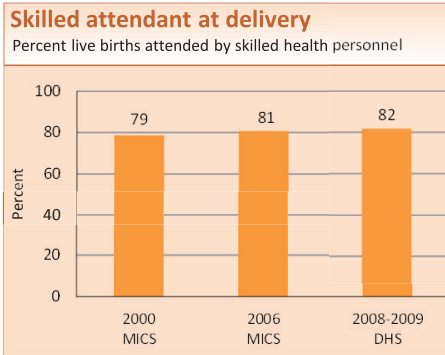
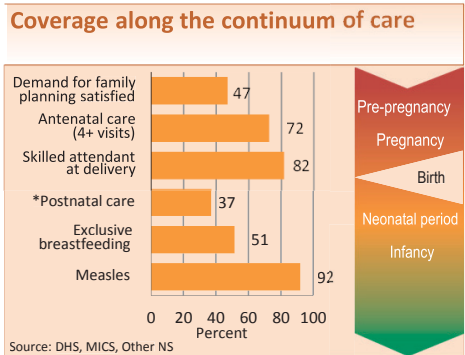


DEMOGRAPHICS

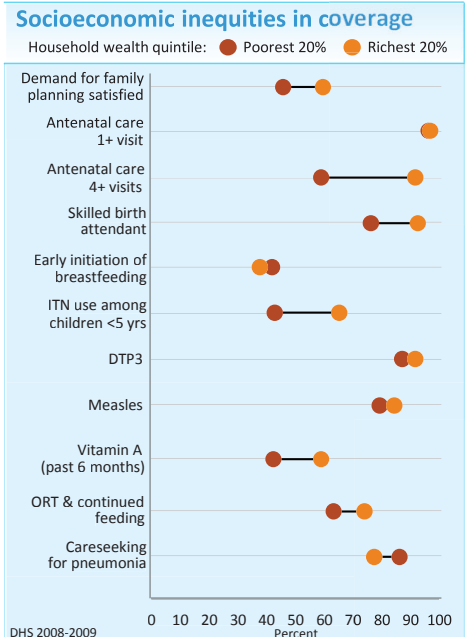
| | | |
|--|-----|-------------|
| Total population (000) | 165 | (2010) |
| Total under-five population (000) | 23 | (2010) |
| Births (000) | 5 | (2010) |
| Birth registration (%) | 75 | (2008-2009) |
| Total under-five deaths (000) | 0 | (2010) |
| Neonatal deaths: % of all under-5 deaths | 33 | (2010) |
| Neonatal mortality rate (per 1000 live births) | 25 | (2010) |
| Infant mortality rate (per 1000 live births) | 53 | (2010) |
| Stillbirth rate (per 1000 total births) | 22 | (2009) |
| Total maternal deaths | - | - |
| Lifetime risk of maternal death (1 in N) | - | - |
| Total fertility rate (per woman) | 3.7 | (2010) |
| Adolescent birth rate (per 1000 women) | 110 | (2007) |



MATERNAL AND NEWBORN HEALTH

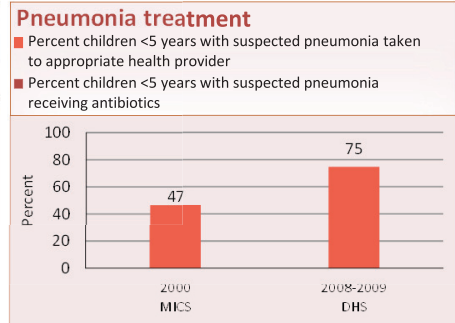
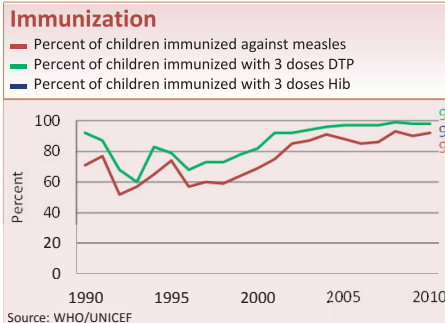


EQUITY



Coverage levels are shown for the poorest 20% (red circles) and the richest 20% (orange circles). The longer the line between the two groups, the greater the inequality. These estimates may differ from other charts due to differences in data sources.

CHILD HEALTH



NUTRITION

| | | | |
|--|----------------|---|----------------|
| Wasting prevalence (moderate and severe, %) | 11 (2008-2009) | Early initiation of breastfeeding (within 1 hr of birth, %) | 45 (2008-2009) |
| Low birthweight incidence (moderate and severe, %) | 8 (2006) | Introduction of solid, semi-solid/soft foods (%) | 74 (2008-2009) |
| | | Vitamin A two dose coverage (%) | 41 (2010) |

