



# Countdown to 2015

## Maternal, Newborn & Child Survival

# Niger

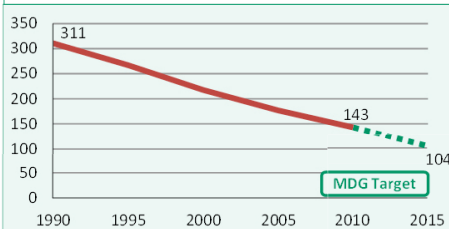
March 2012

### DEMOGRAPHICS

Total population (000)	15,512	(2010)
Total under-five population (000)	3,085	(2010)
Births (000)	755	(2010)
Birth registration (%)	32	(2006)
Total under-five deaths (000)	100	(2010)
Neonatal deaths: % of all under-5 deaths	24	(2010)
Neonatal mortality rate (per 1000 live births)	32	(2010)
Infant mortality rate (per 1000 live births)	73	(2010)
Stillbirth rate (per 1000 total births)	23	(2009)
Total maternal deaths	6,500	(2008)
Lifetime risk of maternal death (1 in N)	16	(2008)
Total fertility rate (per woman)	7.1	(2010)
Adolescent birth rate (per 1000 women)	199	(2004)

### Under-five mortality rate

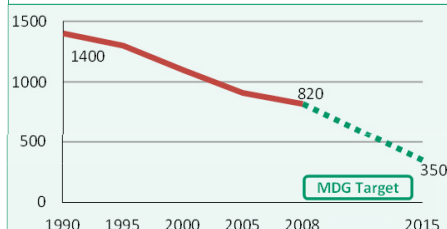
Deaths per 1000 live births



Source: IGME 2011

### Maternal mortality ratio

Deaths per 100,000 live births

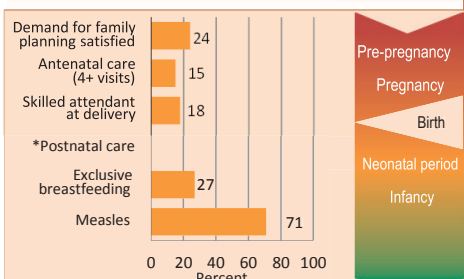


Source: MMEIG 2010

Note: MDG target calculated by Countdown to 2015

### MATERNAL AND NEWBORN HEALTH

#### Coverage along the continuum of care

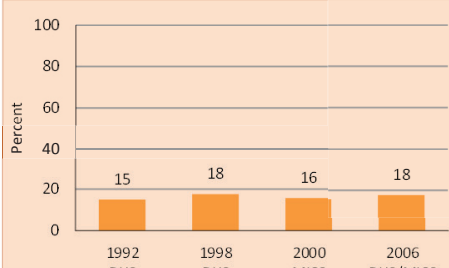


Source: DHS, MICS, Other NS

\* See Annex/website for indicator definition

#### Skilled attendant at delivery

Percent live births attended by skilled health personnel

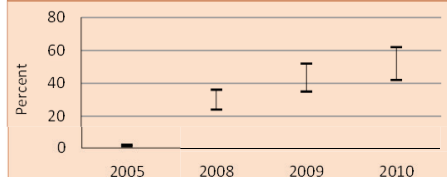


#### Prevention of mother-to-child transmission of HIV

Eligible HIV+ pregnant women receiving ART for their own health (% of total ARVs) 27 (2010)

Percent HIV+ pregnant women receiving ARVs for PMTCT

Uncertainty range around the estimate

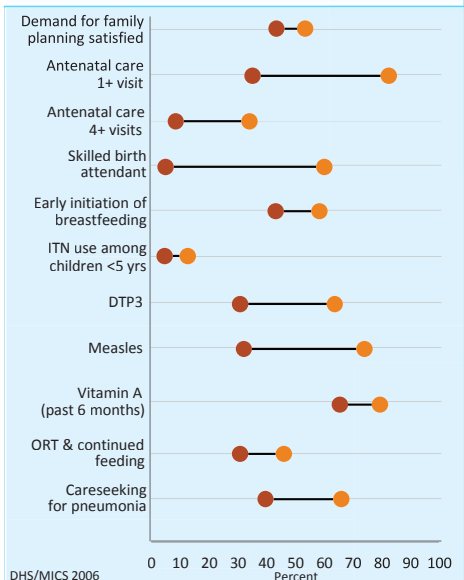


Source: UNICEF/UNAIDS/WHO

### EQUITY

#### Socioeconomic inequities in coverage

Household wealth quintile: Poorest 20% (red circles), Richest 20% (orange circles)



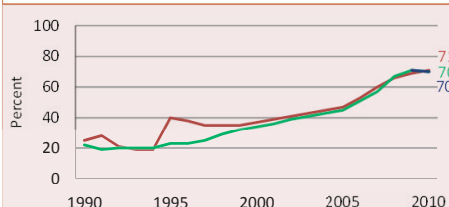
DHS/MICS 2006

Coverage levels are shown for the poorest 20% (red circles) and the richest 20% (orange circles). The longer the line between the two groups, the greater the inequality. These estimates may differ from other charts due to differences in data sources.

### CHILD HEALTH

#### Immunization

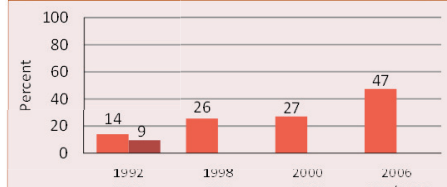
Percent of children immunized against measles  
Percent of children immunized with 3 doses DTP  
Percent of children immunized with 3 doses Hib



Source: WHO/UNICEF

#### Pneumonia treatment

Percent children <5 years with suspected pneumonia taken to appropriate health provider  
Percent children <5 years with suspected pneumonia receiving antibiotics

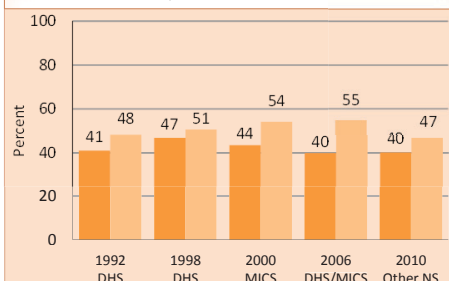


### NUTRITION

Wasting prevalence (moderate and severe, %)	16	(2010)	Early initiation of breastfeeding (within 1 hr of birth, %)	42	(2010)
Low birthweight incidence (moderate and severe, %)	27	(2006)	Introduction of solid, semi-solid/soft foods (%)	-	-
			Vitamin A two dose coverage (%)	98	(2010)

#### Underweight and stunting prevalence

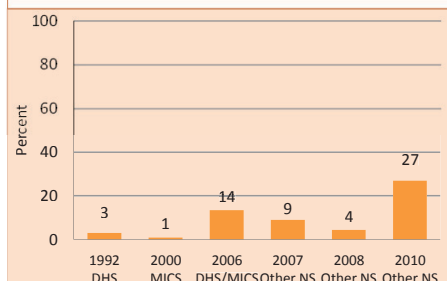
Percent children <5 years who are underweight  
Percent children <5 years who are stunted



Note: Based on 2006 WHO reference population

#### Exclusive breastfeeding

Percent infants <6 months exclusively breastfed



Developed by Countdown to report on core indicators identified by the UN Commission on Information and Accountability, in support of the Global Strategy for Women's and Children's Health